

OD8K11B

14cm black built-in warming drawer with 6 place settings and fan heat circulation.

Features

- Keep dishes warm
- Dough proving program
- A perfect complement to the oven
- Simplified controls
- Extra storage space
- Defrost setting
- Anti-slip mat



Product

Total height (mm) - 139, Total width (mm) - 596, Total depth (mm) - 530

Flush

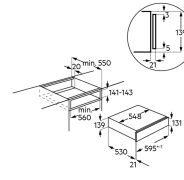
Cut out height (mm) - 141, Cut out width (mm) - 560, Cut out depth (mm) - 550

Shipping

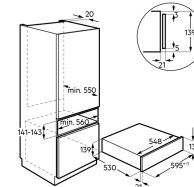
Shipping Volume (m3) - 0.087, Shipping Weight (Kg) - 16.46, Pack dimensions height - 220, Pack dimension width - 610, Pack dimension depth - 650

Model:
OD8K11B

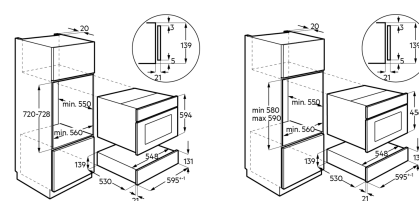
UNDERBENCH



CABINET



CABINET WITH OVEN



© 2024 Electrolux GE Appliances, A PTE. LTD. AEG/IM/China/OD8K11B/5924